



**ALASKA DIVISION OF HOMELAND SECURITY &
EMERGENCY MANAGEMENT**



SITUATION REPORT 22-069 • MARCH 10, 2022

Toll-Free 1.800.478.2337

Anchorage Area 907.428.7000

SEOC 907.428.7100

| | | |
|---|--|--|
| <p><u>SEOC Preparedness Level</u> Level 1 – Routine Operations</p> | <p>http://ready.alaska.gov</p> | <p><u>National Terrorism Advisory System:</u> Read the NTAS Bulletin here</p> |
| <p><u>Maritime Security (MARSEC)</u> Level:1-Minimum Appropriate Security Measures</p> | <p>WHO Novel Coronavirus Pandemic (COVID-19): 2019 Novel Coronavirus</p> | <p><u>Alaska Military Installation Force Protection Level:</u> FPCON Bravo</p> |

(Significant changes from previous situation reports are in red.)

Significant Issues:

Natural Gas Leak – North Slope

The SEOC and a multiagency group including the North Slope Borough, Alaska Department of Environmental Conservation, Alaska Department of Health and Social Services, and ConocoPhillips are engaged in regular communications with the community of Nuiqsut to address concerns with a natural gas leak at the CD1 drill site of the Colville River Unit on the Alpine Field on the North Slope.

Threat Level Changes:

None.

State of Alaska Department of Health and Social Services (DHSS)

DHSS is now leading the State of Alaska COVID-19 Recovery through Department Operations, supported by SEOC and other state departments as required.

For current COVID-19 information, see:

<https://covid19.alaska.gov/>

<https://www.cdc.gov/coronavirus/2019-ncov/index.html>

NTAS BULLETIN

To read current or expired advisories, click the link below:

<https://www.dhs.gov/national-terrorism-advisory-system>

Travel Alerts and Conditions

For current driving conditions dial 511 or link to <http://511.alaska.gov/>

Barry Arm Landslide / Tsunami Risk

For the latest information on the Barry Arm Landslide and Tsunami risk, click here:

[DGGs Barry Arm Landslide and Tsunami Hazard](#)

Recent Earthquakes

USGS Earthquake Information: <http://earthquake.usgs.gov/>

National Tsunami Warning Center: <http://tsunami.gov/>

Alaska Volcanoes

Davidof Alert Level: **Advisory** and Aviation Color Code: **Yellow**

Great Sitkin Alert Level: **Watch** and Aviation Color Code: **Orange**

Pavlof Alert Level: **Watch** and Aviation Color Code: **Orange**

Semisopchnoi Alert Level: **Watch** and Aviation Color Code: **Orange**

For Alaska Volcano updates, go to: <https://www.avo.alaska.edu/>

Air Quality Index (AQI) Advisories

For the most up to date Air Quality Index Advisories:

<http://dec.alaska.gov/Applications/Air/airtoolsweb/Home/Index>

Spills of Oil and Hazardous Substances

The ADEC Spill Prevention and Response page is located at:

<http://dec.alaska.gov/spar/ppr/spill-information/response/>

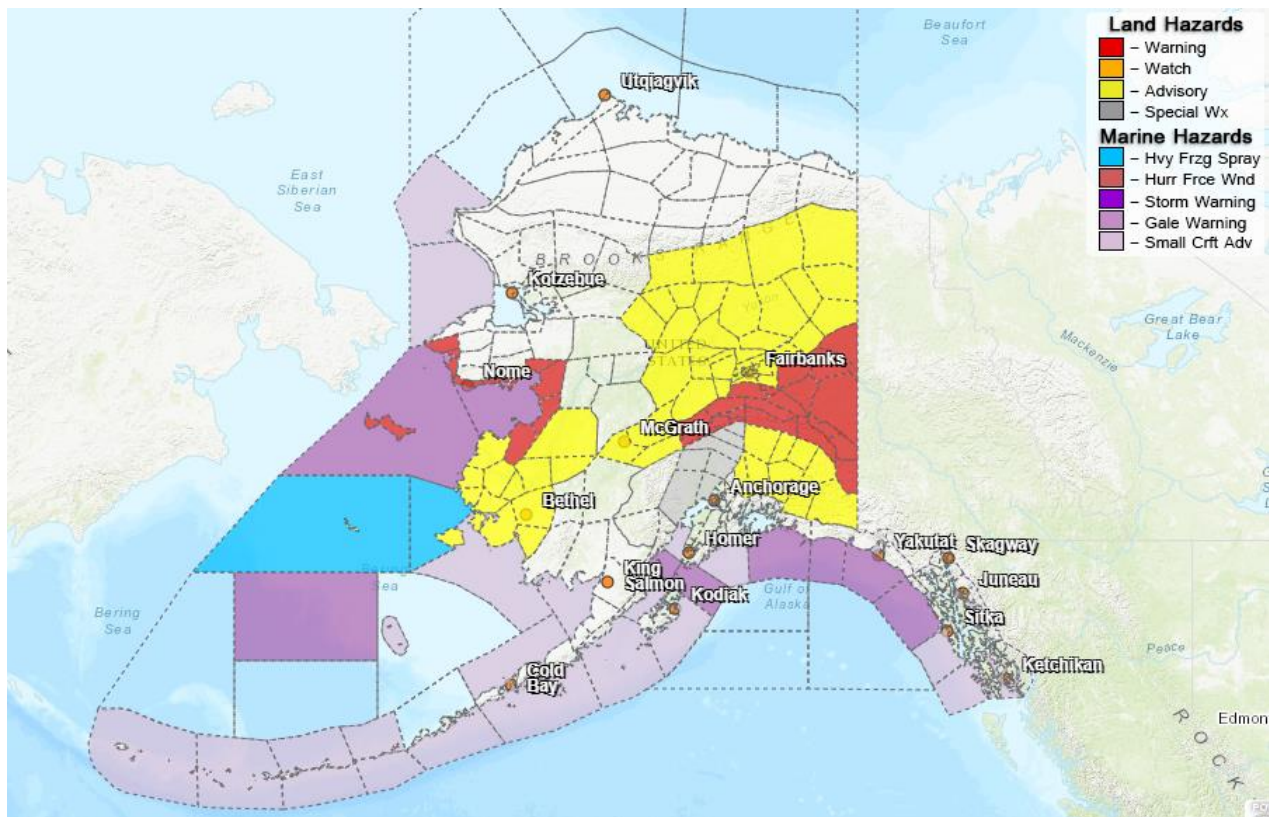
Alaska Cyber Security Information

State Employees may sign up for cyber security notifications and alerts at

<https://oit.alaska.gov/security>

CISA-Cybersecurity Services and Tools: www.cisa.gov/free-cybersecurity-services-and-tools

Significant Weather:



A Winter Storm Warning remains in effect for Denali, the Eastern Alaska Range, Deltana and Tanana Flats and the Upper Tanana Valley – Until 6:00 P.M. tomorrow. Up to 16 inches of snow.

A High Wind Warning remains in effect for the Southern Seward Peninsula Coast, Eastern Norton Sound and Nulato Hills and St. Lawrence Island and the Bering Strait Coast until 6:00 A.M. tomorrow. Winds gusting up to 65mph are possible.

Winter Weather Advisories have been issued for the following areas:

- Kuskokwim Delta – Until 9:00 A.M. today.
- Yukon Delta, Lower Yukon Valley and the Upper Kuskokwim Valley – Until 9:00 P.M. today.
- Central Interior, Southeastern Brooks Range, Middle Tanana Valley, Upper Koyukuk Valley and the Yukon Flats – Until 6:00 A.M. tomorrow.
- Copper River Basin north of Gakona – Until 3:00 P.M. tomorrow

A Special Weather Statement remains in effect for the Susitna Valley. An additional 1 to 3 inches of snow are possible through tomorrow.

For more information and the most current weather, Watches / Warnings / Advisories go to: <http://www.weather.gov/arh>.

Avalanche Forecast:



There are areas near Haines and Valdez with considerable risk, and near Cordova with moderate risk.

Check the Avalanche Forecast Center closest to your area for the most up to date information on avalanche potential. <https://alaskasnow.org> or <https://www.weather.gov/afc/avalancheweather>

The Next Situation Report: will be **11** March 2022. A significant change in the situation or the threat level will prompt an interim report.

This report is posted on the internet at <https://ready.alaska.gov/sitrep>. To register for email distribution, go to <http://list.state.ak.us/mailman/listinfo/dhsem.situation.report>. Direct questions regarding this report to the SEOC at 907-428-7100 or seoc@alaska.gov